

## FIBER OPTIC FLAME SCANNERS for MITSUBISHI 501 series Gas Turbines

---



Replaces the obsolete OEM flame scanner.

No amplifier module. *Direct output to turbine control.*

BFI Automation, a German manufacturer of flame monitoring systems, was established in 1973. BFI has been the OEM supplier to Siemens, ABB, Alstom, GE Europe, and other gas turbine makers for decades. Since 2008, we have retrofits for GE 6B/7EA/7F series worldwide.

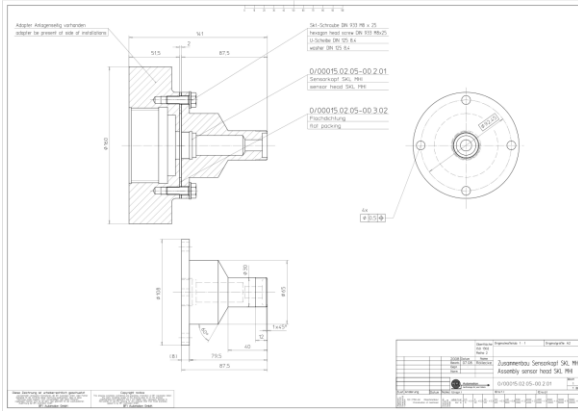
- ✓ **No vulnerable electrical components near the heat!**  
*We use well-protected fiber optics for many years.*
- ✓ **No separate amplifier module**  
*Amplifier function is built into the flame scanner box with direct output to the turbine control.*
- ✓ **SIL 3 Reliability Rating**  
*Per IEC EN 61508, PFD (probability of failure on demand) is 1 in up to 10,000 starts. PFH (prob. of failure per hour of continuous use) is 1 in up to 100 million hours!*
- ✓ **Self-Checking / Fail-Safe**  
*The CFC dual channel microprocessor analyzes flicker frequency to ensure the flame is modulating, eliminating false signals. If a problem is detected, the scanner fails open.*
- ✓ **Wide Spectral Range**  
*Not affected by start-up condensate or water wash cycle.*
- ✓ **Adjustable**  
*Performance can be data-logged and analyzed.*
- ✓ **Rapid Response**  
*in milliseconds, not waiting on the turbine control for signal interpretation.*
- ✓ **Two Year Warranty**  
*Limited to repair or replacement, at our discretion, of an undamaged unit, for a period of twenty-four months from date of shipment.*
- ✓ **Repairable**  
*Years from now, should it be necessary, the electronics can be repaired.  
Electronics can be replaced with the turbine running.*

Although a natural gas burns in the UV (ultraviolet) spectral range, the 501 flame can migrate so we have found best performance using an IR (infrared) sensor. Background radiation is ignored by our patented dual channel microprocessor algorithm which analyzes for flicker frequency.

Our system consists of three components...

### ADAPTER / PROBE

S710.MH1



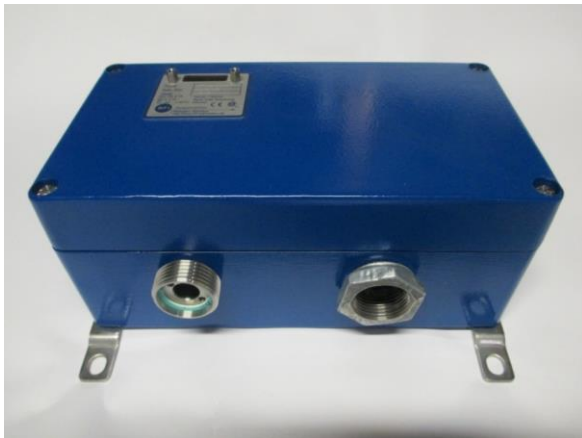
### FIBER OPTIC CABLE

S730.4MHT



### FLAME SCANNER

CFC 2000 IR2 WM



Mounts outside the heat wherever you want

Available accessories:

### POWER CONVERTER G652



### PROTECTION CAP, MALE S841.0



### PROTECTION CAP, FEMALE S841.1



### FIBER OPTIC CLAMP, STRUT HT10



### MAGNIFIER P106L



### SIGNAL GENERATOR P105C





For us to provide a price quotation, please...

Confirm that the ADAPTER/PROBE will fit to your machine.

Measure the length from the ADAPTER/PROBE to where you want to mount the FLAME SCANNER box. The typical 501 requirement is 4 meters (13'-1") long but we can provide any length in full meter increments up to 20m.

Confirm the flame scanner outputs your control expects. We can provide single or dual relay, current (4-20mA), or variable voltage.

Our flame scanner requires 24VDC, consuming up to 250mA per scanner. It is your choice whether to use one power converter per scanner or, if control poling logic allows, to share power supplies.

---

FLAME SCANNER is UL/CSA approved  
Enclosure is IP65/66 (equiv to NEMA 4/4X)  
NEC Class 1 Div 2 Groups BCD

---

Made in Germany by BFI Automation GmbH  
Imported to the USA and Canada by BFI Automation USA

Exclusive USA/Canada distributor

**VALVE & INSTRUMENT** *express*

PO Box 5072, Basking Ridge NJ 07920 800 743 1433 908 450 7070

050120 MHI 501